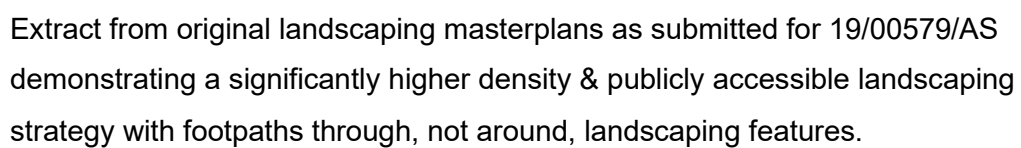
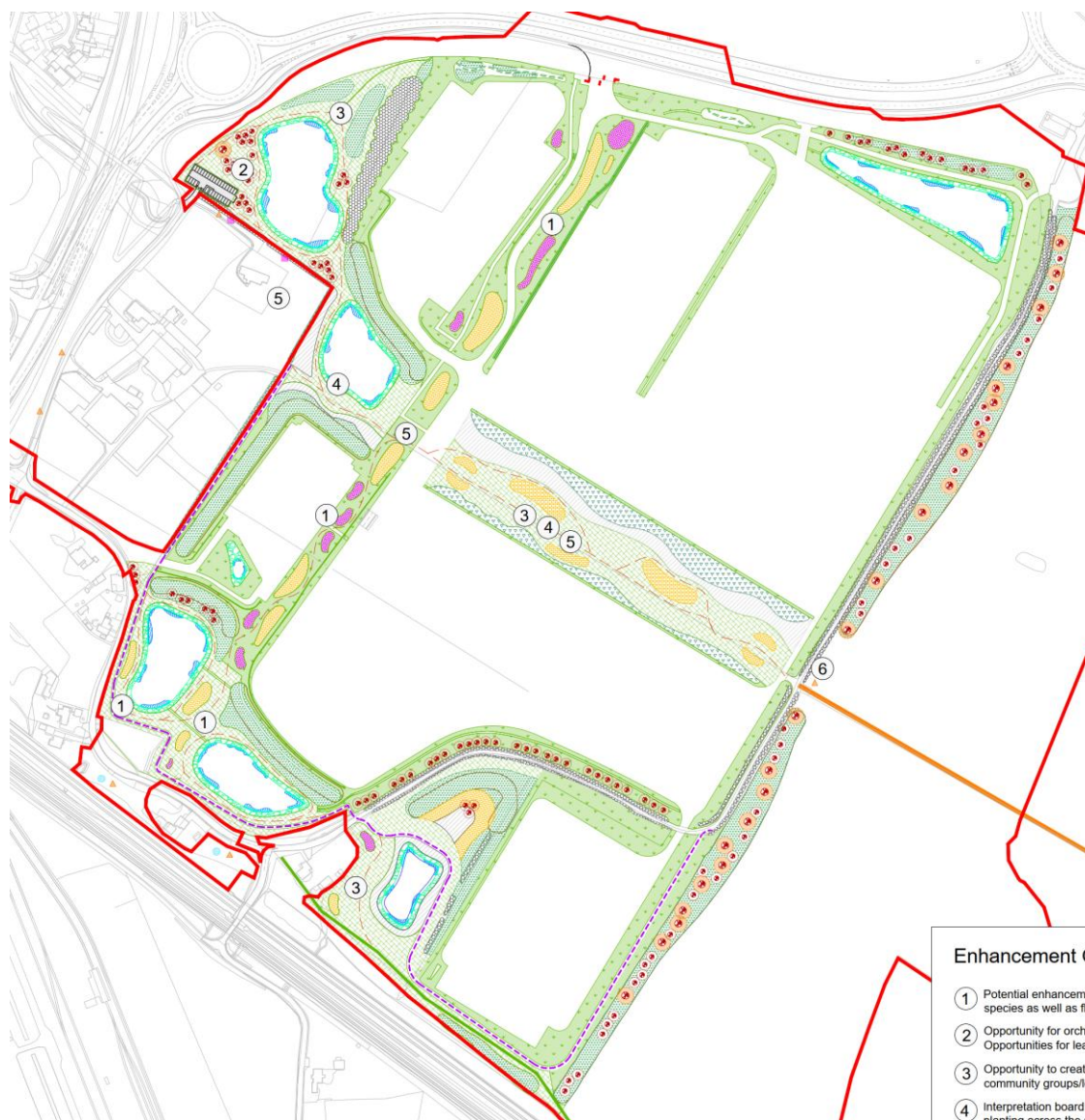


Comparison with original strategy



Landscape plan for the temporary permission:



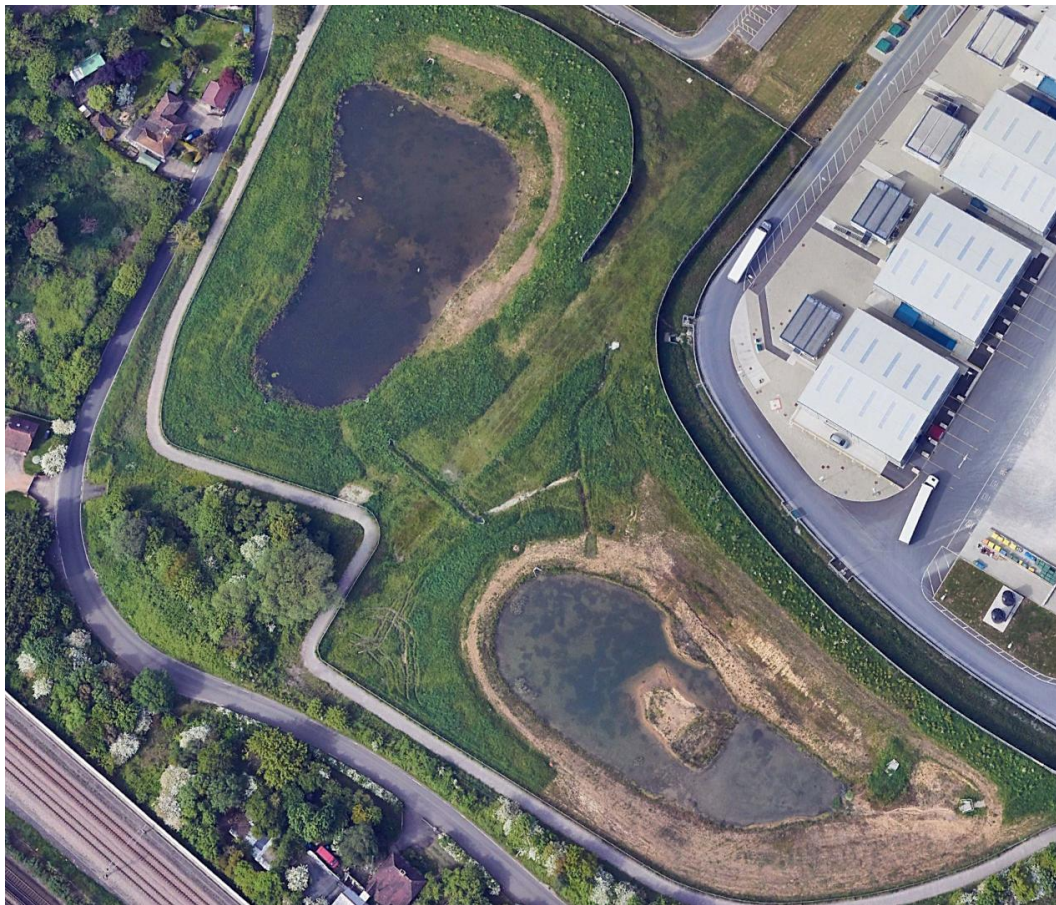
Strategy proposed by the current landscape improvement plan:



Examples of landscaping maintenance issues:



Parts of the landscaping were not provided with topsoil significantly impeding uptake of seeding. Image from May 2023.



Update 22nd November 2025

It is noted that landscaping rectification works have commenced on site replacing some of the failed planting & adding new. The works were in progress at the time of walking around the site on Saturday 22nd November 2025.