

SITE OVERVIEW

1:8000

The map shows a site overview with four numbered sections (1, 2, 3, 4) and a red dashed boundary. Section 1 is in the top left, Section 2 is in the middle left, Section 3 is in the bottom right, and Section 4 is in the top right. A red dashed line outlines a large area covering Sections 1, 2, and 3. A solid red rectangle highlights Section 3. The map includes a scale of 1:8000 and a north arrow.

SITE OVERVIEW


1 2 3 4

1:8000

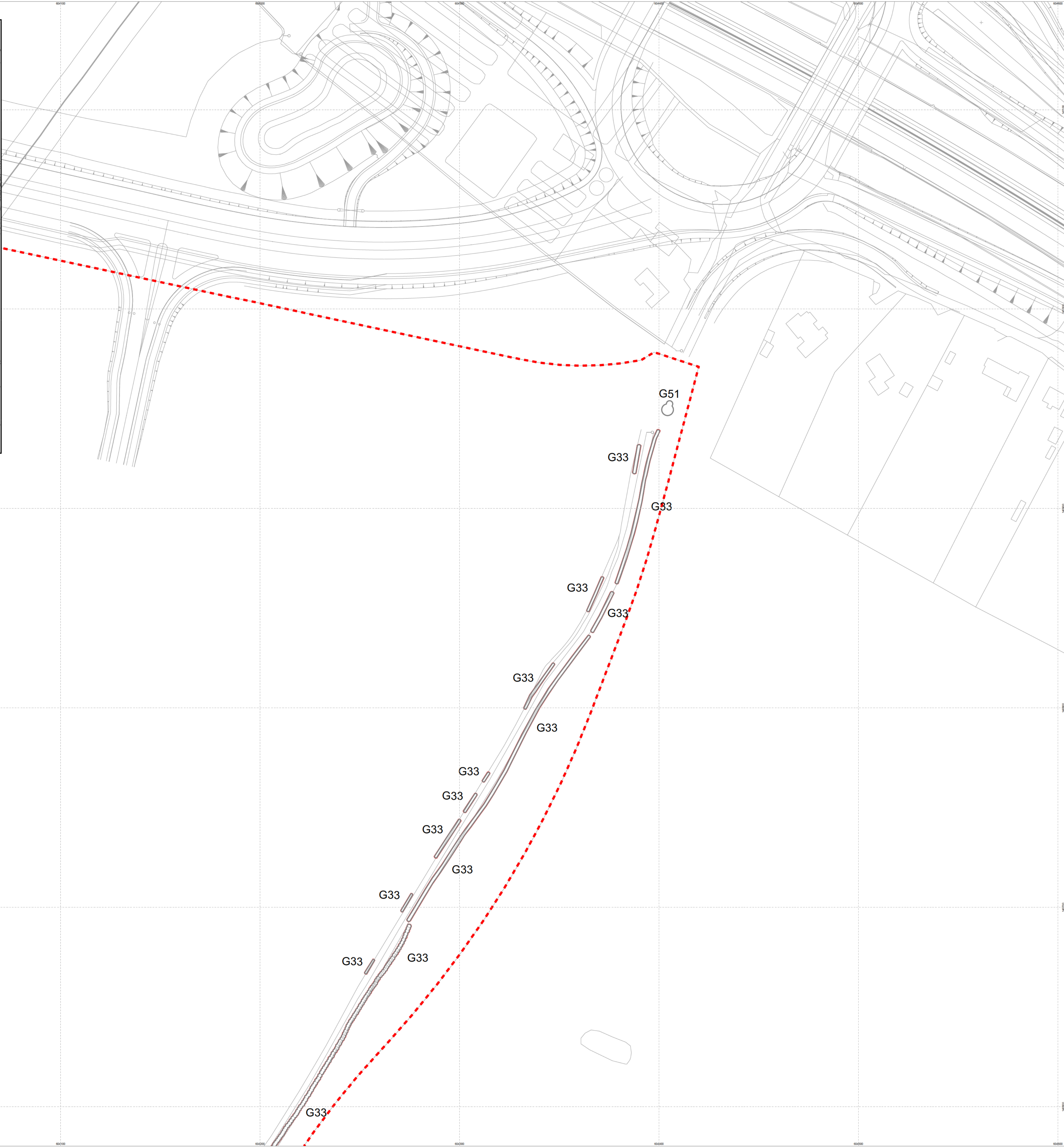
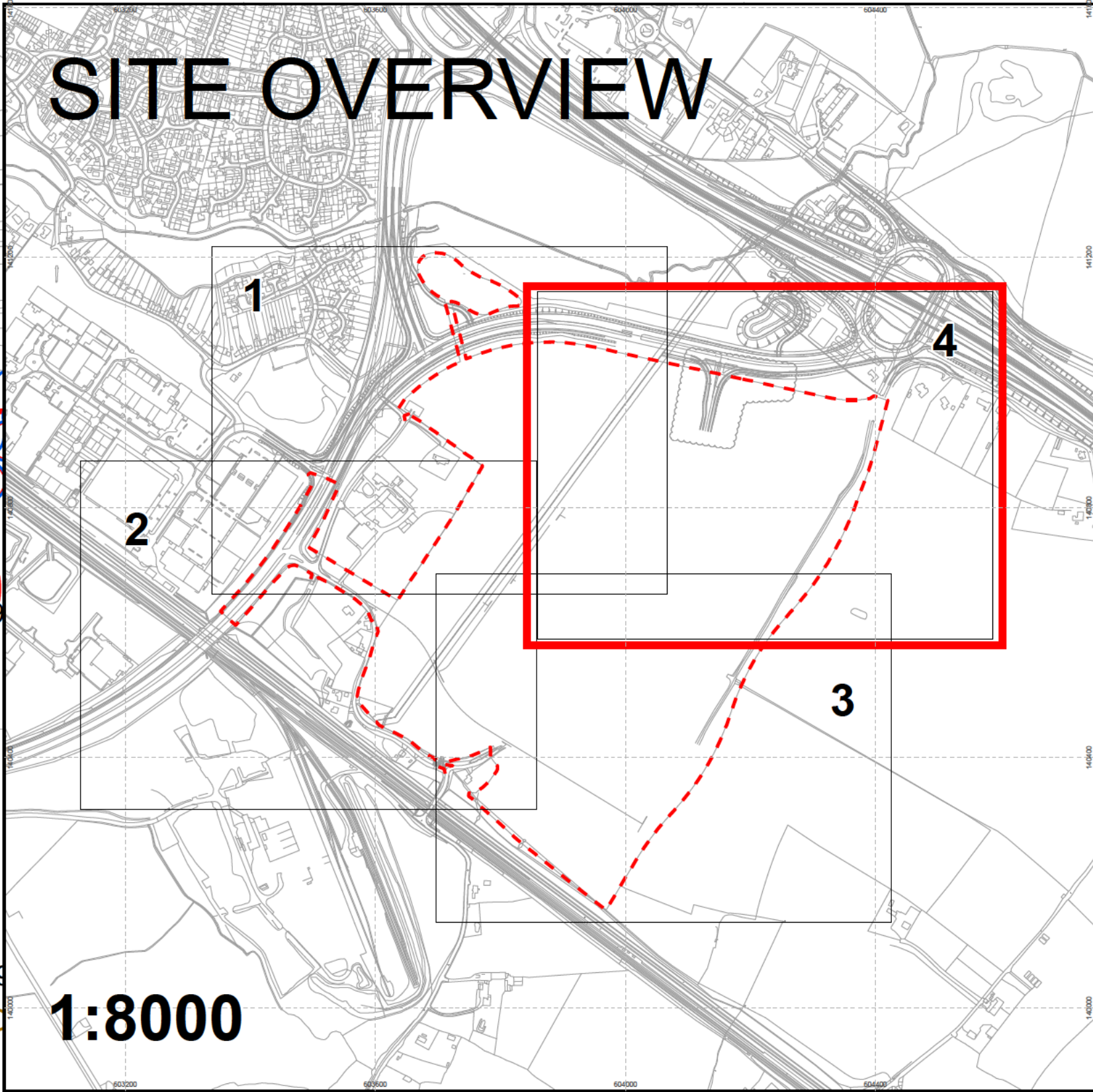
Legend

- Category A tree
- Category B tree
- Category C tree
- Category U tree
- Scrub
- Category B group
- Category C group
- Current canopy
- Roof Protection Area
- Application area

The original of this drawing was produced in colour -
a monochrome copy should not be relied upon

<p>Stour Park West</p>	
<p>Drawing Tree Constraints Plan Page 3 of 4</p>	
<p>Civil Aviva Life and Pensions UK Ltd</p>	
<p>Drawing Number C111633-01-RevA</p>	<p>Rev on Rev A</p>
<p>Scale: @ A1 1:1,000</p>	<p>Date March 2019</p>
<p>Approved By [Redacted Signature]</p>	<p>Drawn By [Redacted Signature]</p>
<p>  MIDDLEMARCH ENVIRONMENTAL </p>	
<p>[Redacted Signature]</p>	

This map is not related from the Ordnance Survey map with the permission of Ordnance Survey on behalf of The Controller of the Map. It is a reproduction of the map data © Crown copyright and (unpublished reproduction prohibited) copyright © 2018 Ordnance Survey Ltd.

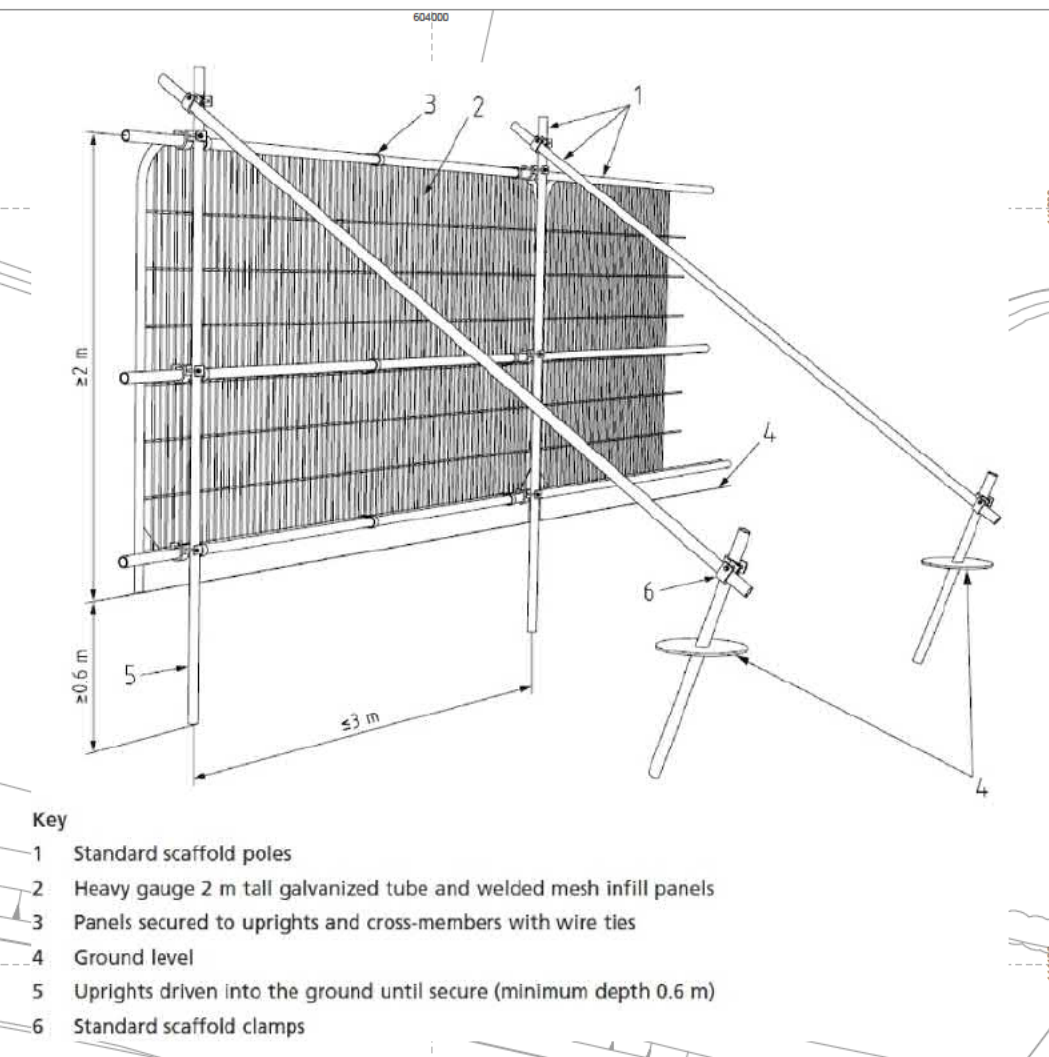
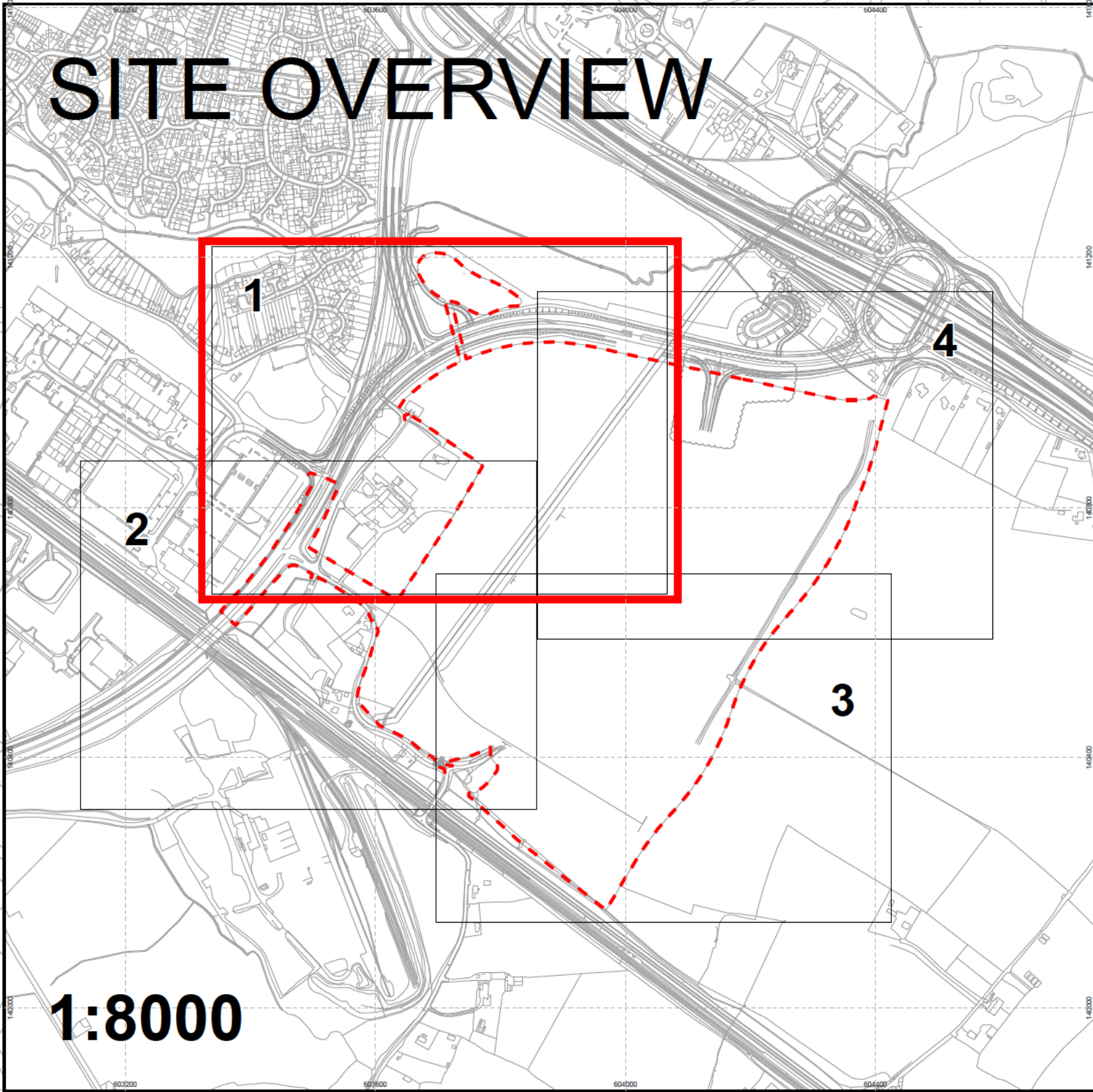


Legend

- Category A tree
- Category B tree
- Category C tree
- Category U tree
- Scrub
- Category B group
- Category C group
- Current canopy
- Root Protection Area
- Application area

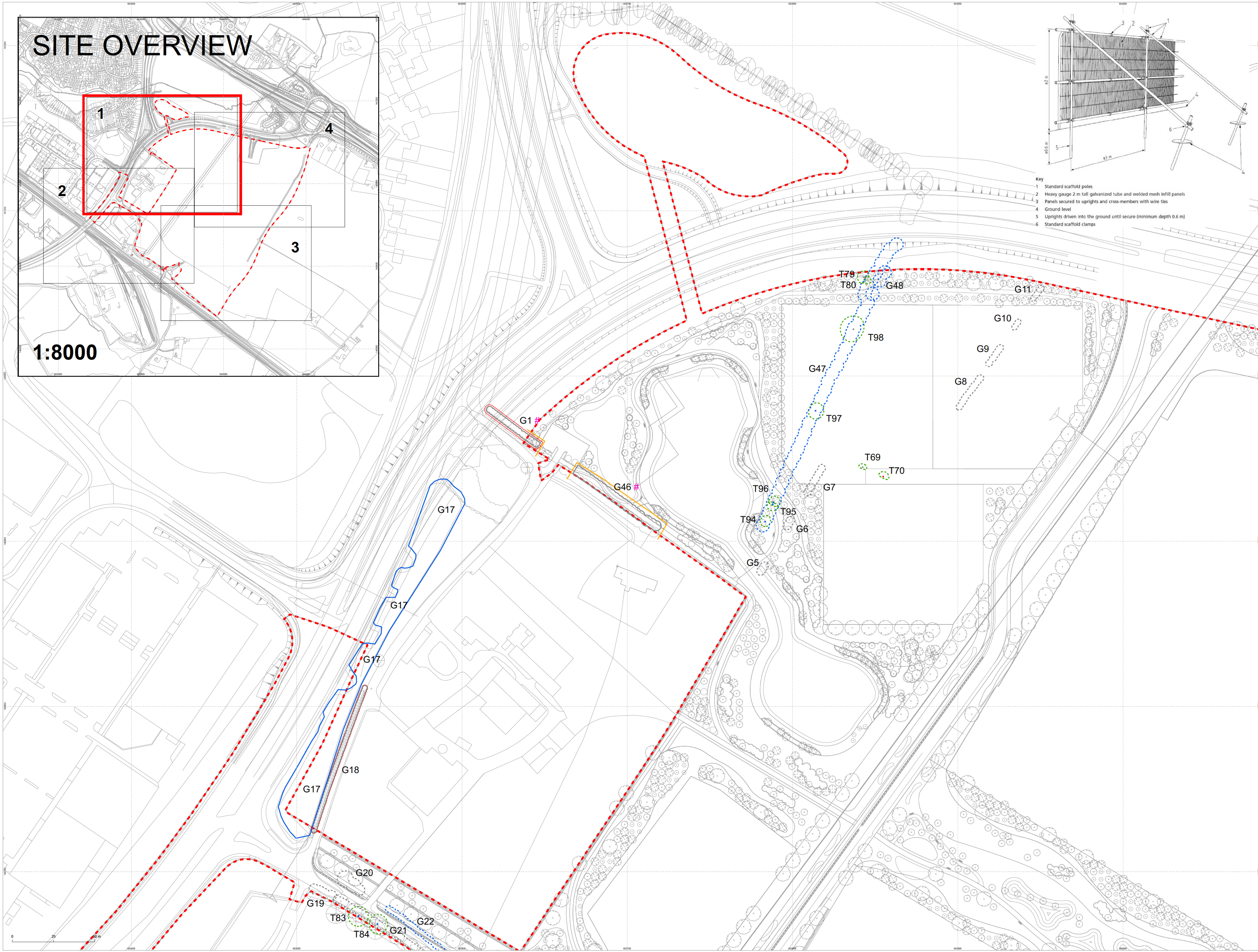
The original of this drawing was produced in colour - a monochrome copy should not be relied upon

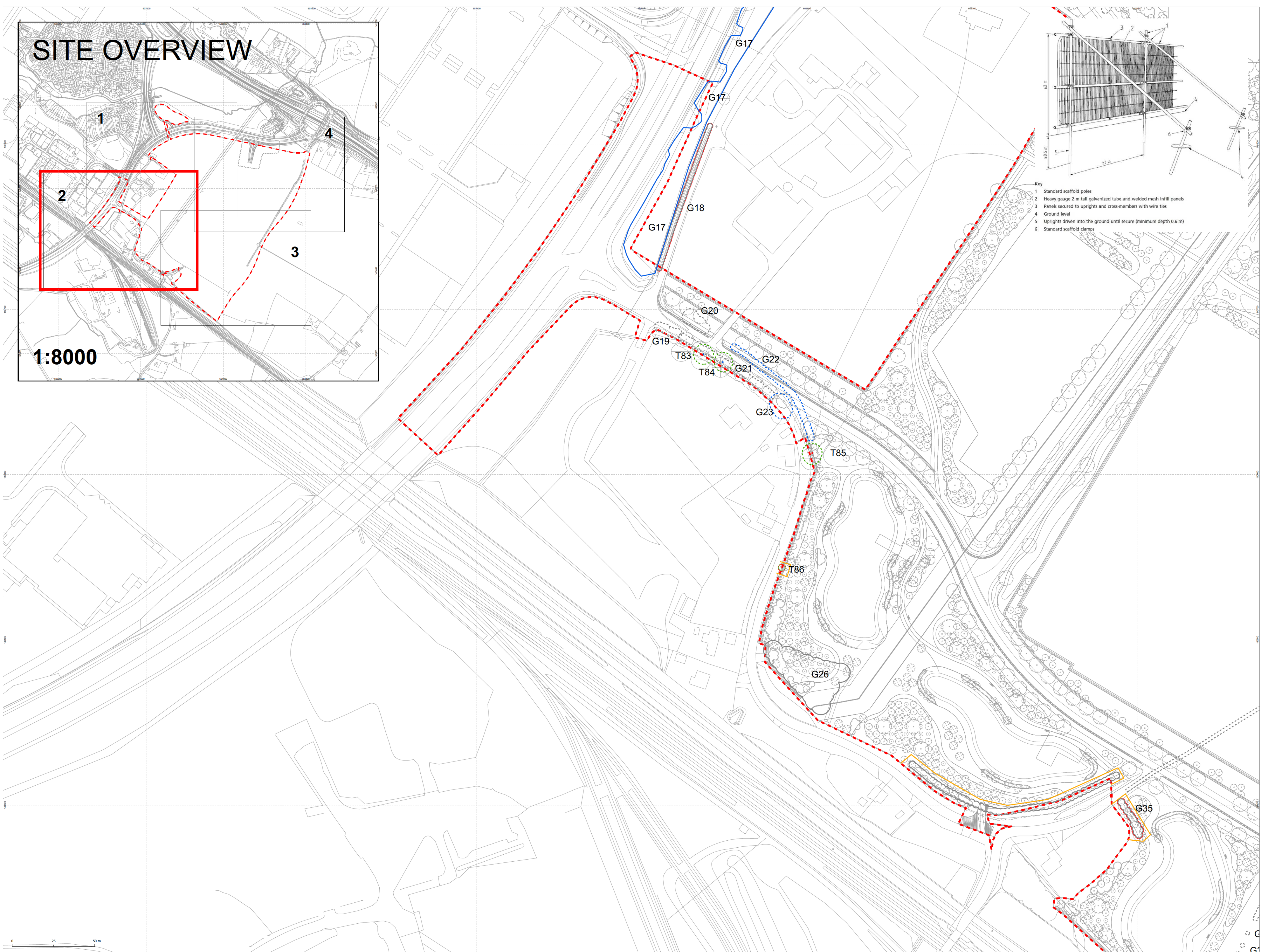
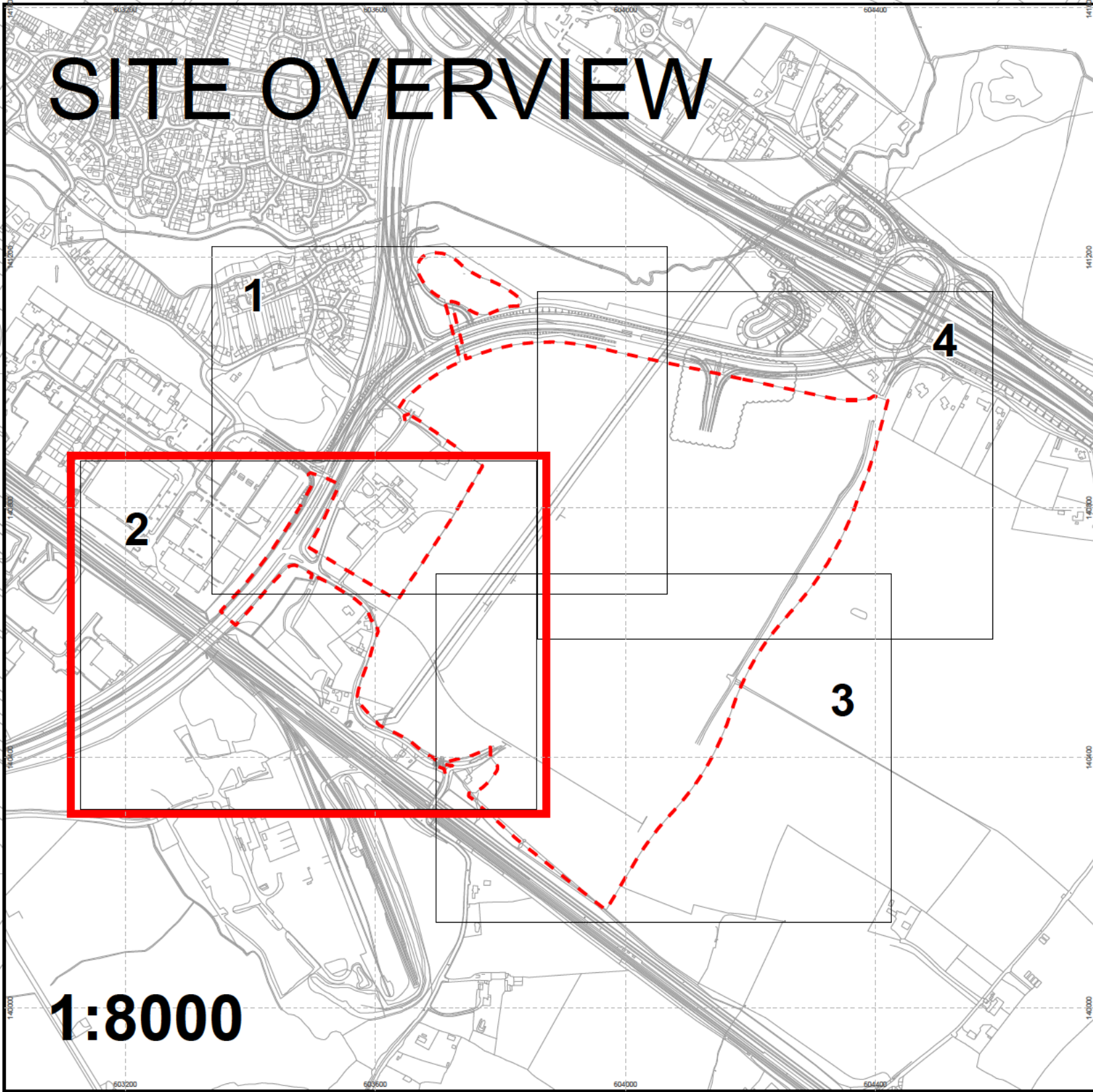
F. Stour Park West Tree Protection Drawings (Doc Ref: RT-MME-123906-02 Rev A)



- Legend**
- Category A tree
 - Category B tree
 - Category C tree
 - Category U tree
 - Category B group to be removed
 - Category C group to be removed
 - Category B group
 - Category C group
 - Current canopy - tree to be removed
 - Current canopy - tree to be retained
 - Root Protection Area
 - Tree protection barrier (BS 5837:2012)
 - Application area
 - Proposed plan
 - Pruning works required

The original of this drawing was produced in colour - a monochrome copy should not be relied upon





- Key
- 1 Standard scaffold poles
 - 2 Heavy gauge 2 m tall galvanized tube and welded mesh infill panels
 - 3 Panels secured to uprights and cross-members with wire ties
 - 4 Ground level
 - 5 Uprights driven into the ground until secure (minimum depth 0.6 m)
 - 6 Standard scaffold clamps

C123906-03-01-RevA

Legend

- Category A tree
- Category B tree
- Category C tree
- Category U tree
- Category B group to be removed
- Category B group
- Category C group to be removed
- Category C group
- Current canopy - tree to be removed
- Current canopy - tree to be retained
- Root Protection Area
- Tree protection barrier (BS 5837:2012)
- Application area
- Proposed plan
- Pruning works required

The original of this drawing was produced in colour - a monochrome copy should not be relied upon

Project: Stour Park West

Drawing: Tree Protection Plan Page 2 of 4

Client: Aviva Life and Pensions UK Ltd

Drawn: C123906-03-01-RevA

Scale: 1:1,000

Rev: Rev A

Date: May 2019

Approved by: [Signature]

MIDDLEMARCH ENVIRONMENTAL